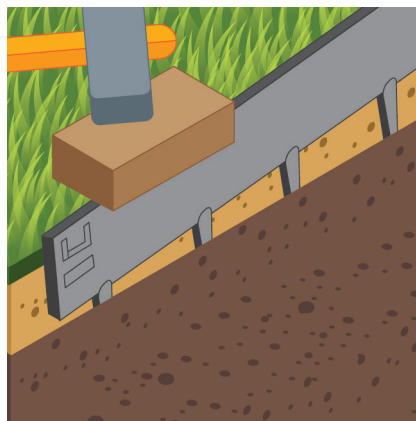


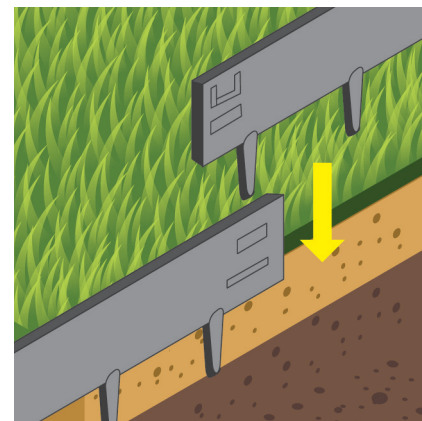
Lawn Edging Installation Guide



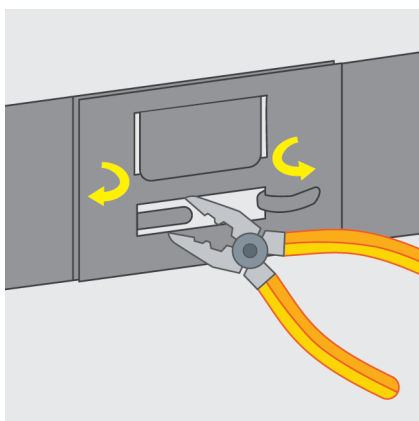
STEP 1: Using a hose or rope, make a guide for your edging to follow. If the ground is relatively soft you are good to go. If not, you may need to loosen the ground with a flat spade or pickaxe to ensure the edging can be installed with difficulty.



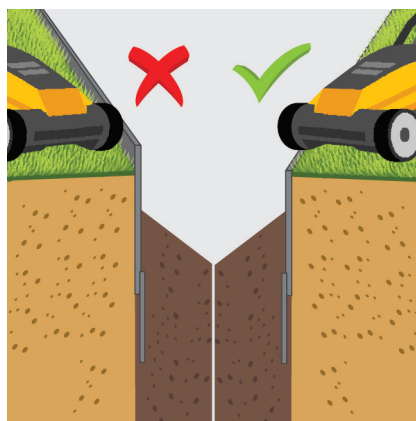
STEP 2: Starting at one end, tap the edging down using a wooden block and mallet. Ensure the edging remains vertical as it is driven into the ground, this prevents twisting when it comes to installing your next edging.



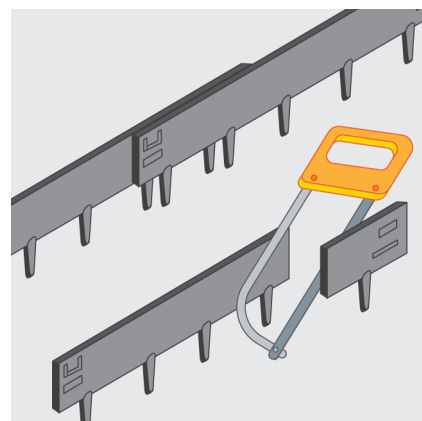
STEP 3: Before driving the whole edging into the ground connect the next edging. Try to maintain a continuous line along the top of the edgings when tapping them into the ground to prevent the connections from coming apart.



STEP 4: Connect the edgings by sliding the large tab on one edging down through the slit on the adjacent edging. Using a pair of thin nosed pliers, pull both thin tabs through the slit provided and rotate them back on themselves.



STEP 5: If using the edging on a lawn area the top of the edging should be flush with the soil to prevent the lawn mower blade making contact with the top of the edging.



STEP 6: If you have an edging that is too long, you can either overlap the last joint or cut edging using a hacksaw. Be sure to use a metal file to smooth the cut end and we recommend applying metal primer to prevent rusting.

 **Turfonline.**